

Struggle with your imaging?!

Just Look at It

JULI™

Smart fluorescent
cell analyzer



Meet JuLI™ to meet your needs for live-cell imaging

Increasing numbers of researchers are using live-cell imaging to study cellular functions. The JuLI™, a smart fluorescent-cell analyzer, was developed to enable a variety of biological experiments for live-cell imaging.

Compact design for flexible use

Flourescent live-cell images from various cell culture dishes are directly captured in a tissue-culture hood. This compact design prevents contamination, providing better experiment results.



Capture live cell images and movies

Sequential time-lapse fluorescence and/or bright images are stored, and can be converted to movie files. Growing live-cell movies can be generated even in cell-culture incubator.

Communication through wireless data transfer *

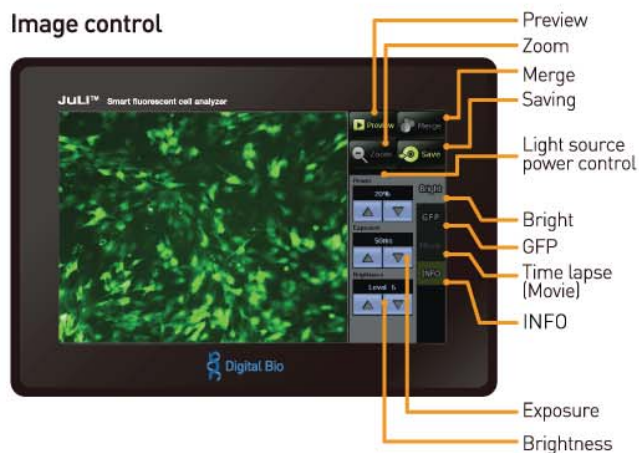
Utilizing Wi-Fi technology, all data, including images and movies, can be transferred automatically from JuLI™ to PC.

* Upcoming technology

The revolutionary technologies make JuLI™ smart

- Stand-alone [All-in-one system]
- 40,000 hrs lifetime of Blue LED
- Dark-room free
- Plug & Play technology
- One-touch image capturing
- LCD touch screen
- Cell counting and analysis of fluorescent/bright*

Image control



Applications

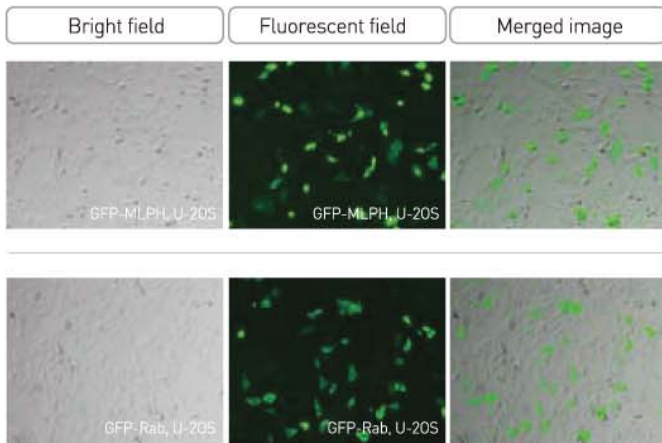
- Live cell imaging (time lapse)
- Cell migration assay
- Cell-based assay optimization
- Cell culture quality control
- Proliferation assay

Specifications

Power	AC 100-240V, 50-60Hz
CPU	AMD AU1250
Magnification	~ 200x
Filter	Excitation / Emission / Dichroic filter
Light source	White / Blue LED (488nm) Optional . White / Green LED (532nm) . White / Red LED (630nm)
Camera	CMOS 1.3M pixels (1280X1024)
Display	7" TFT-LCD (WVGA, 800X480)
Weight	< 5kg
Size	240x350x320mm
Data storage	SD card (8G)

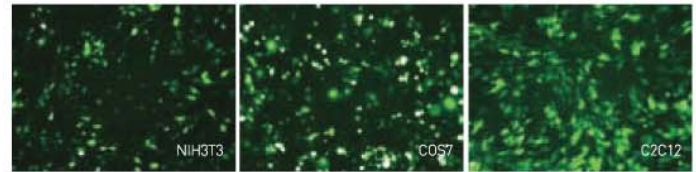
Images by JuLI™-smart fluorescent cell analyzer

Live-cell imaging



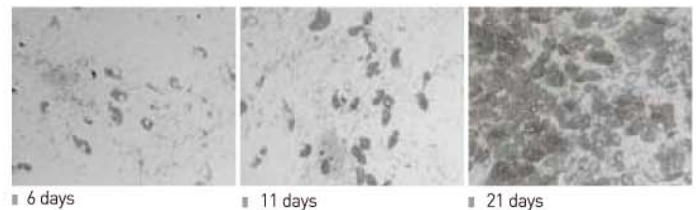
The U20S cells were transfected by NEON transfection system (from Invitrogen) using 0.5ug of the GFP-MLPH plasmid & GFP-Rab plasmid. Images captured 24 hours after transfection.

GFP images of 3 different cell types



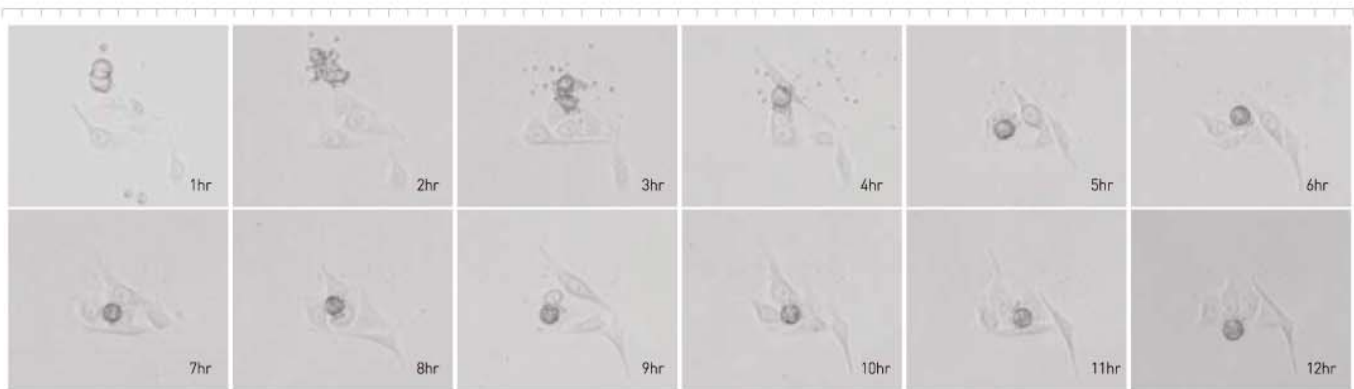
The NIH3T3, COS7, C2C12 cells were transfected by NEON transfection system (from Invitrogen) using 0.5ug of the EGFP-N1 plasmid. Images captured 24 hours after transfection.

Adipogenesis images



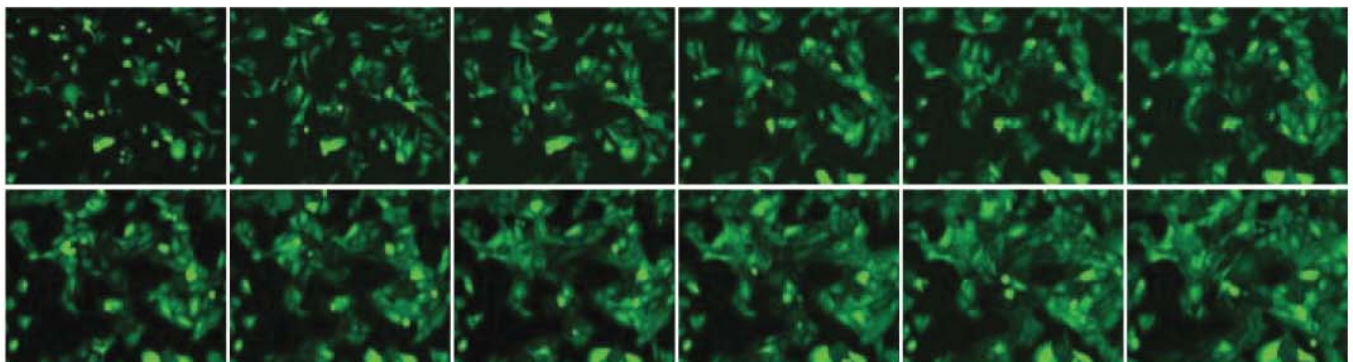
Examples of the differentiated adipocyte images for 6, 11, 21 days. All images were captured by JuLI™.

Time-Lapse imaging in bright field



Examples of 12- hour time-lapse imaging of the HeLa cells changing shapes. All images were captured at 5-minute intervals.

Time-Lapse imaging in fluorescent field



Examples of 58-hour time-lapse imaging of U20S (GFP stable cell line) changing shapes. All images were captured at 15-minute interval.

All time-lapse images are stored, and can be converted to movie files.

HYPO₂OXYGEN
Define your environment



5111 Pegasus Court, Suite H
Frederick, MD 21704
877-497-6994
www.HypOxygen.us